

UNITECH DINING HALL | PROJECT BRIEFING

PAUL WALTER | ATLAS URBAN

22ND JUNE 2017



THE PAPUA NEW GUINEA
UNIVERSITY OF TECHNOLOGY

 **Atlas
Urban**

A RARE LANDMARK CONSTRUCTION OPPORTUNITY

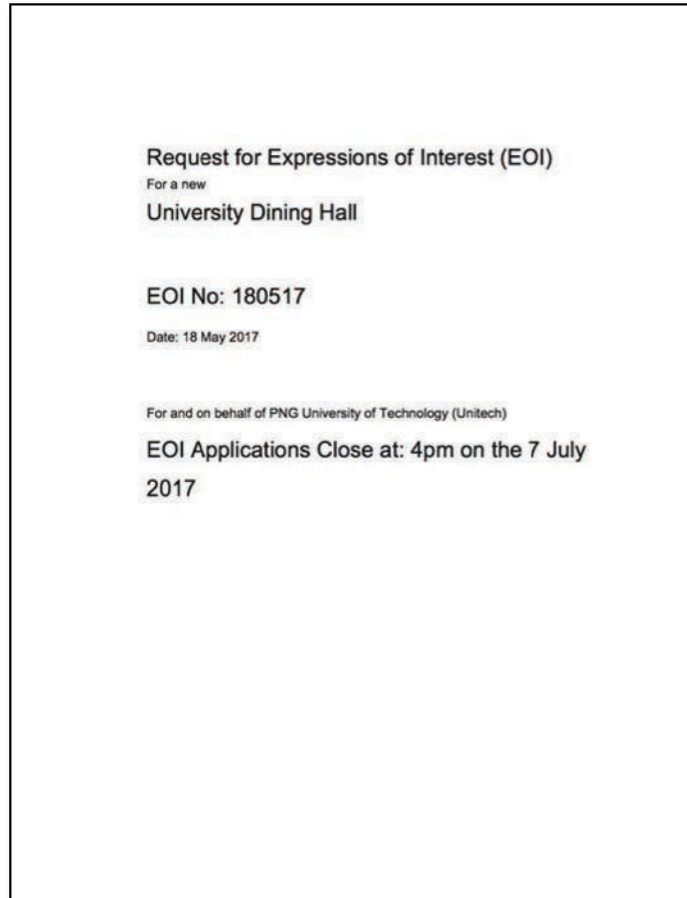


- THE UNIVERSITY OF TECHNOLOGY IS PAPUA NEW GUINEA'S PREMIER SCIENCE AND TECHNOLOGY UNIVERSITY
- THE NEW UNITECH DINING HALL WILL OCCUPY A PIVOTAL POSITION ON THE CAMPUS AND PLAY A VITAL ROLE IN THE LIFE OF THE UNIVERSITY
- IT IS THE FIRST IN A NEW GENERATION OF BUILDINGS THAT WILL TRANSFORM THE CAMPUS
- THE DRAMATIC ENTRY SPACE FOURTEEN METERS TALL HAS BEEN DESIGNED TO CREATE A LANDMARK
- DESIGNED TO SEAT 1000 STUDENTS
- THE BUILDING IS IN A PRIME POSITION, ADJACENT TO THE HISTORIC KOFI HAUS, NEAR THE LIBRARY AND FRONTING THE MAIN AVENUE

UNITECH DINING HALL | PROJECT DETAILS

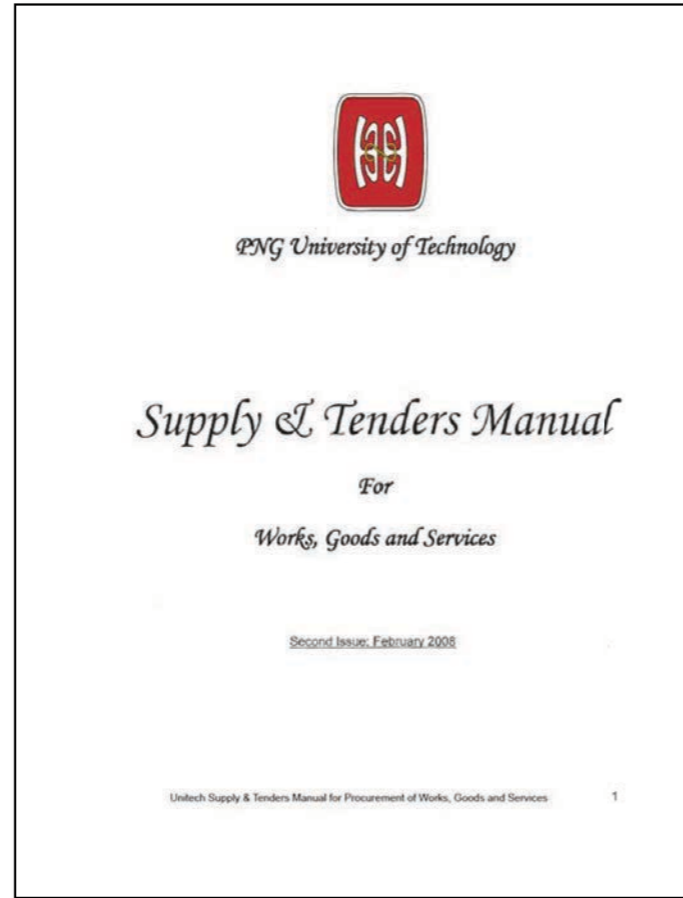
On the 18th May 2017 an Expression of Interest Document was first released by the Papua New Guinea University of Technology Vice-Chancellor's Office.

There are four key documents for this EOI process:



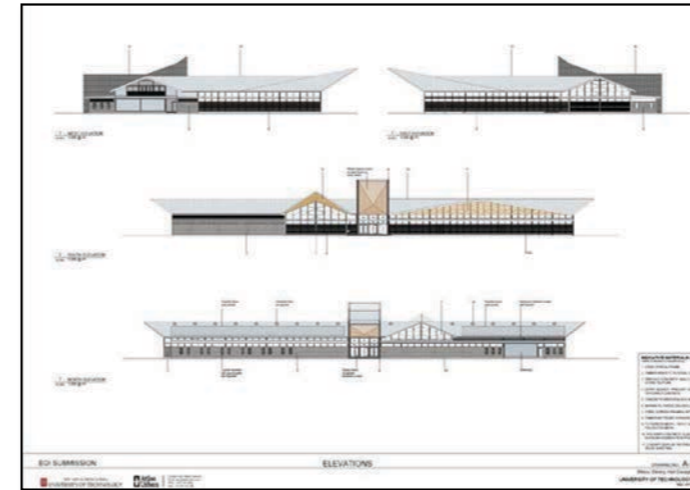
EXPRESSION OF INTEREST DOCUMENT

This document is for the guidance of parties lodging an Expression Of Interest submission for the Unitech Dining Hall Project.



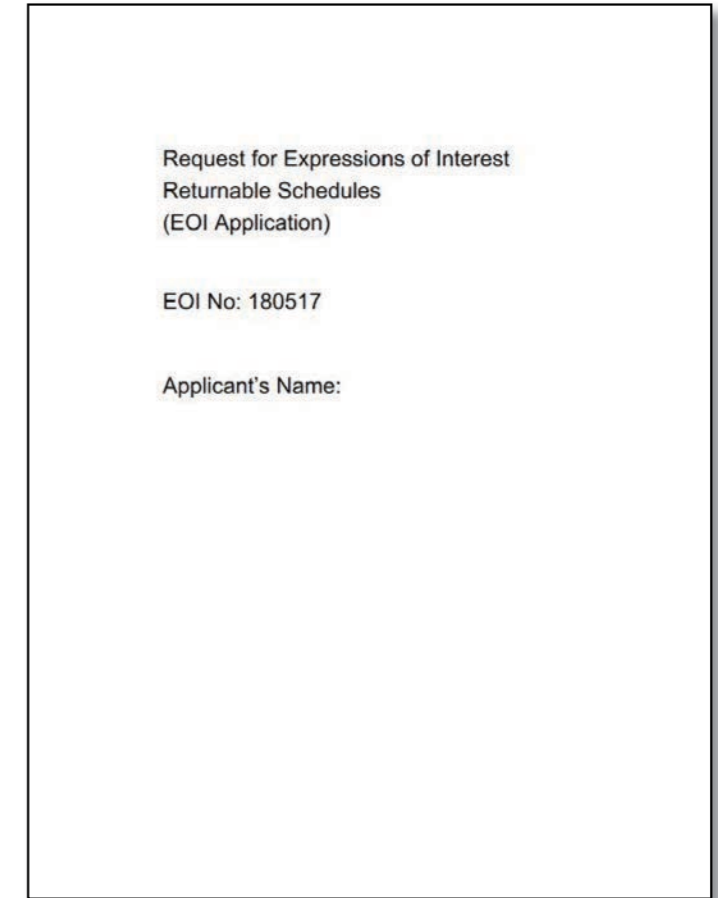
SUPPLY & TENDERS MANUAL

This document sets out the procedures for tendering.



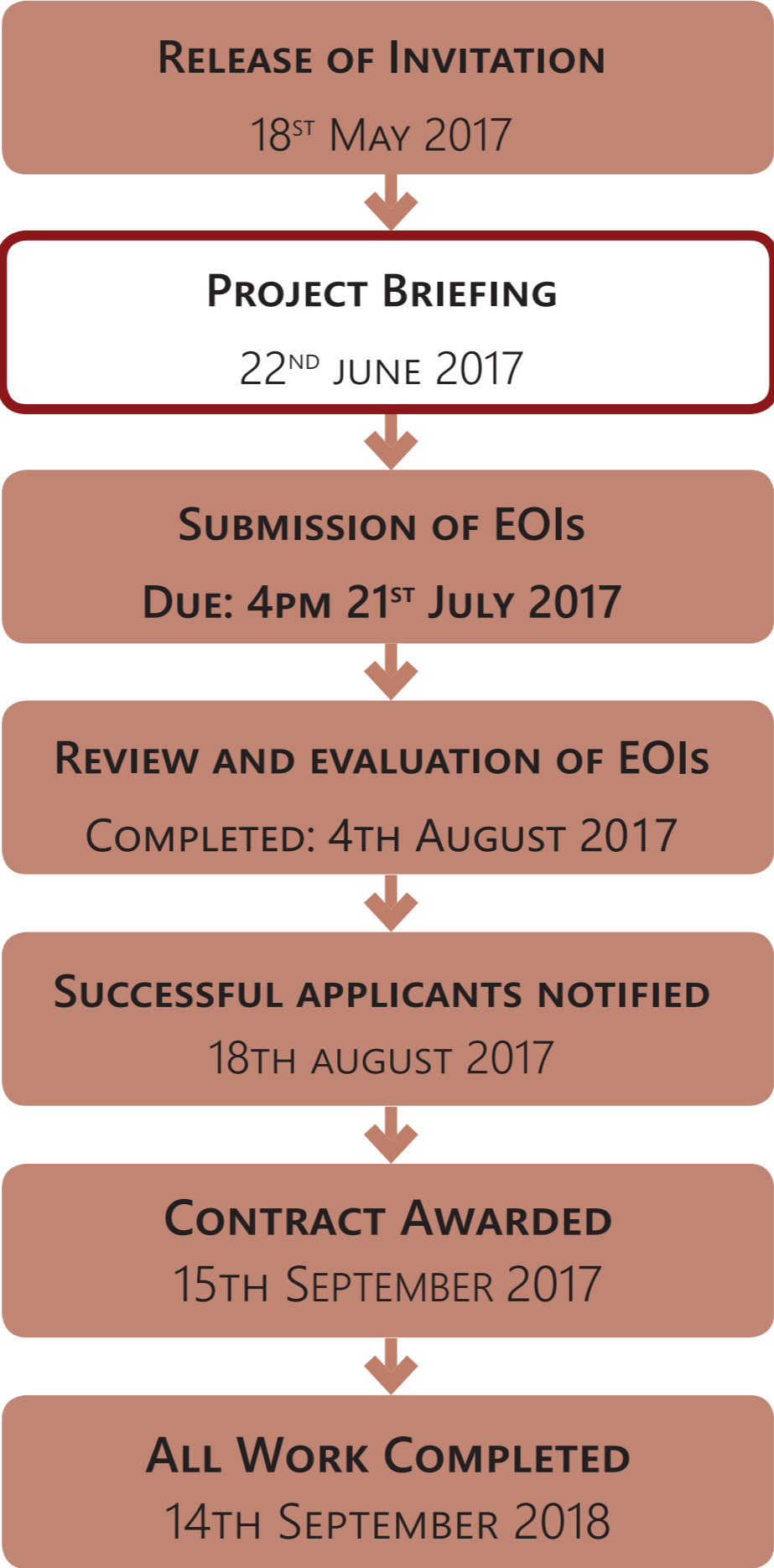
DESIGN INTENT

This document contains the architectural drawings and materials for the dining hall project.



RETURNABLE SCHEDULES

For the lodging of the expression of interest submission.



UNITECH | CAMPUS MASTERPLAN

The campus occupies a strategic position in the city of Lae, and has the potential to significantly benefit the region by growing as a major education facility.

The city of Lae has very strong growth prospects in the immediate and longer term. It is PNG's main port city (serving both the Islands and the Highland regions) and its primary industrial city.

There is a severe shortage of alienated land (non-customary land) in the city. Given the University's large land holding with a single owner, work has begun to create UNI-CITY, which combines the University's core teaching activity with business and commercial activity, housing and other institutions.

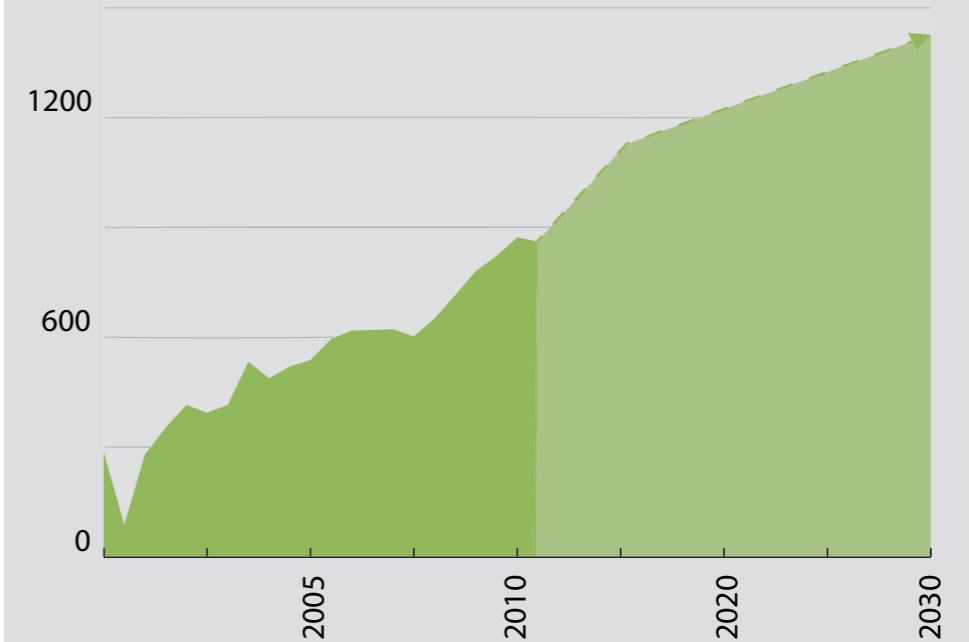




THE PAPUA NEW GUINEA UNIVERSITY OF TECHNOLOGY



The student population is now at 3000 which is full capacity for the existing campus and its facilities. In recent years the student population has been growing at a rate of 10% p.a. At this rate of growth the population will double every 7 years. On-campus-living is likely to continue as the main mode of living for students and staff because of the housing crisis in Lae and poor infrastructure in the wider city.



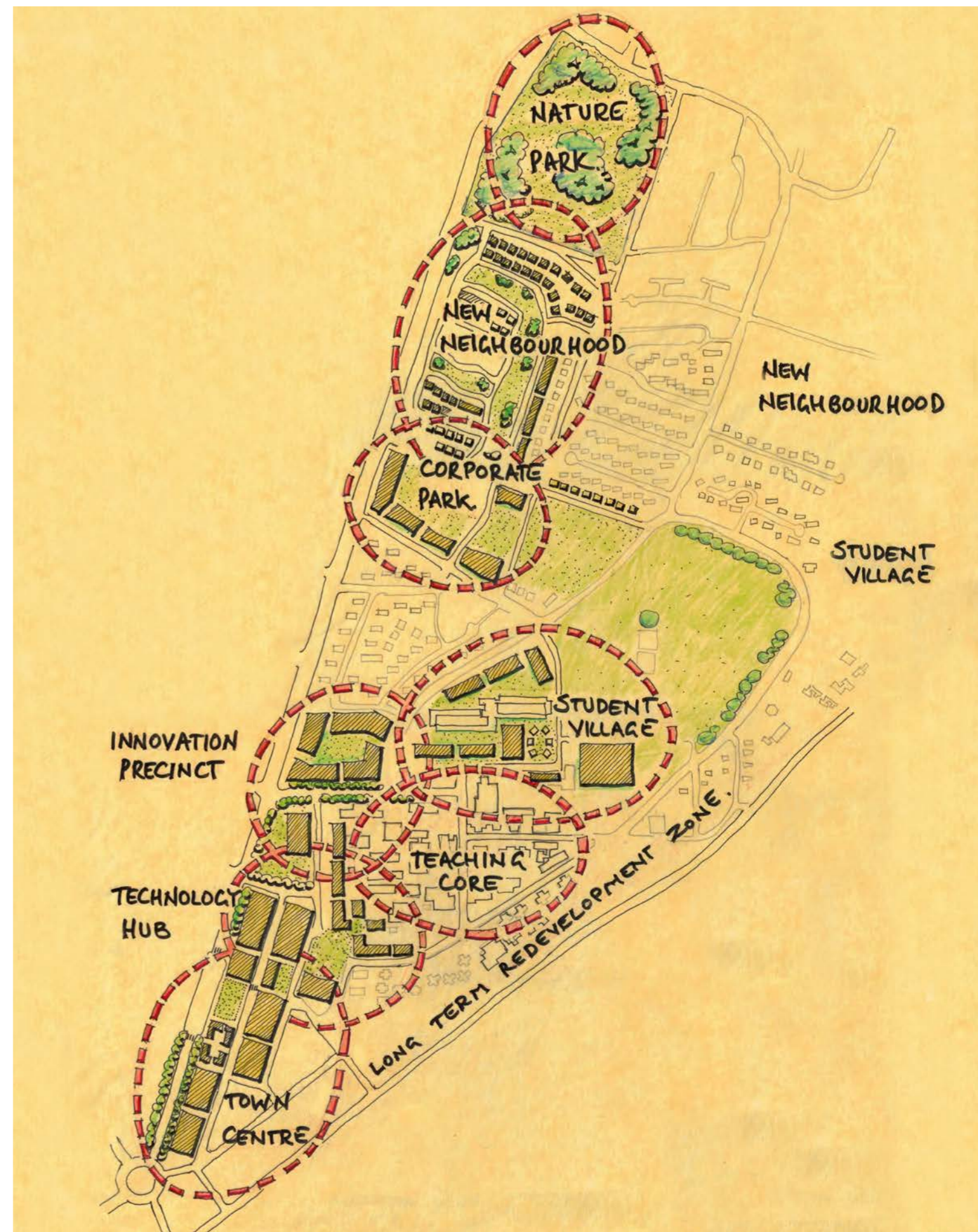
Graduates per year since 1990 (Indicative of student population)
Projected Growth from 2011 - 2030.

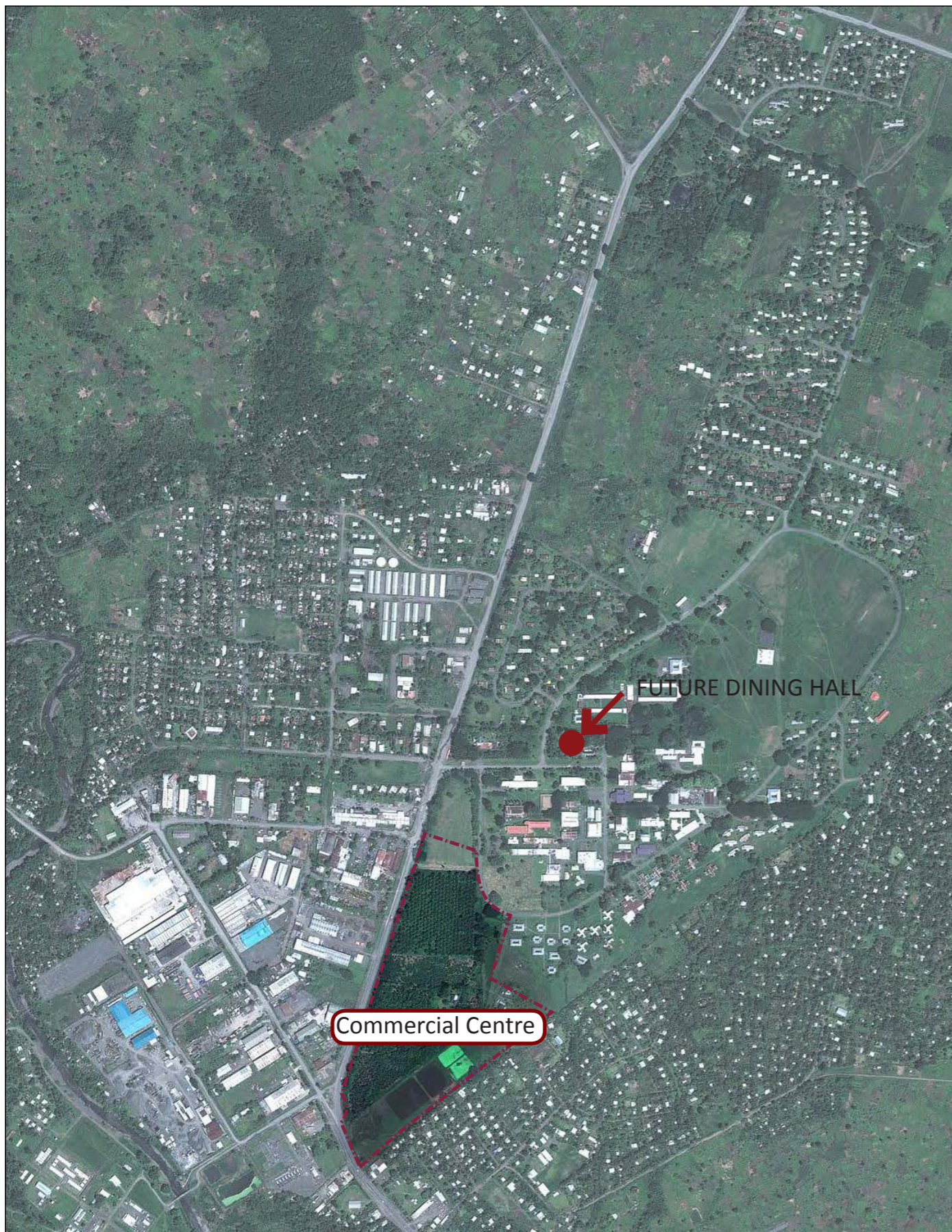
“Unitech is a central institution producing the leaders, the thinkers and the skilled professionals to support the emergence of Papua New Guinea and the region”

- **PAPUA NEW GUINEA’S PREMIER TECHNOLOGICAL TERTIARY INSTITUTION**
- **SUBSTANTIAL INSTITUTION OF INTERNATIONAL IMPORTANCE**
- **UNIVERSITY WITH STRONG GOVERNANCE & PROBITY**

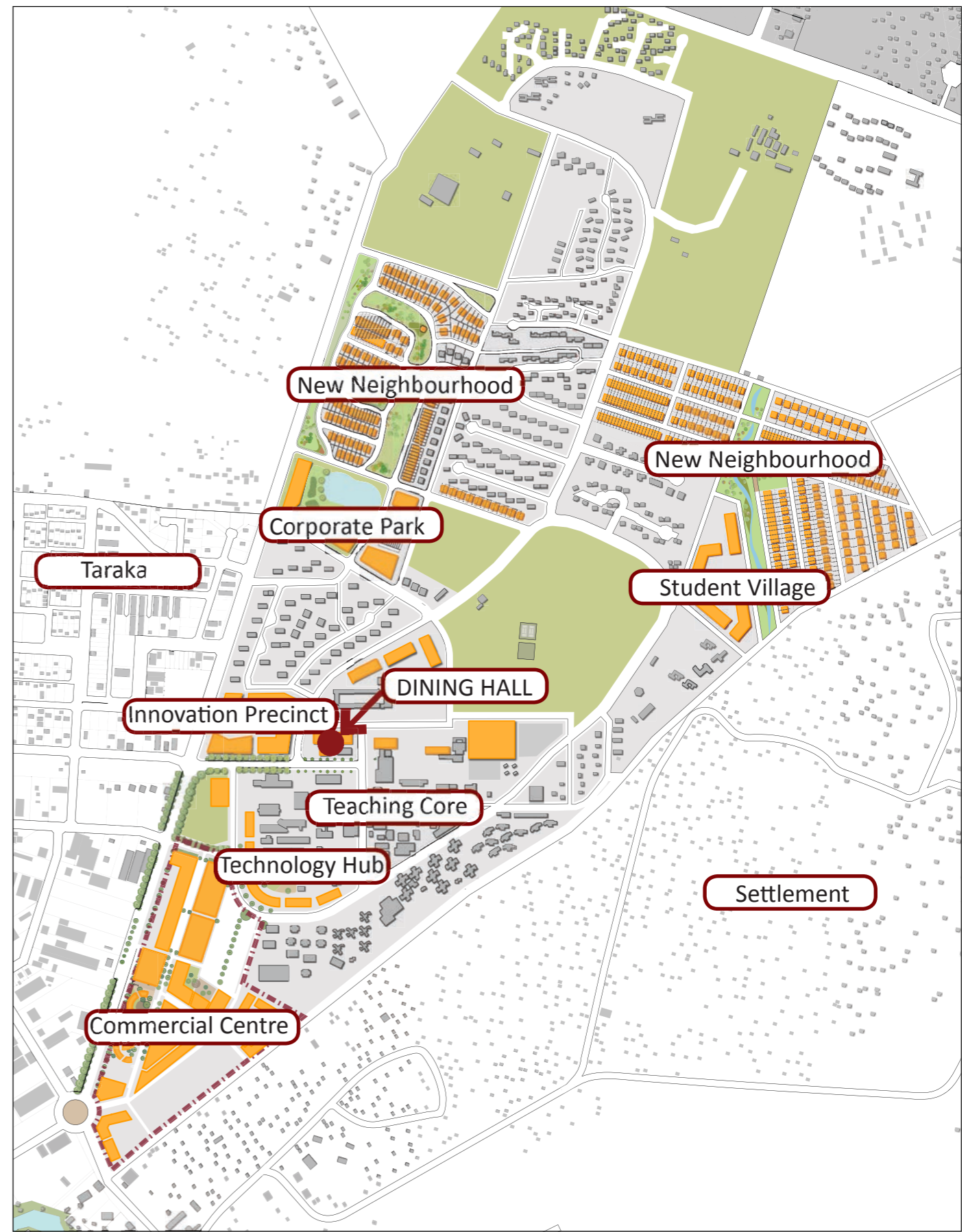
“Unitech’s campus in Lae will be a flourishing centre of learning and research with strong links to industry and the wider economy. The campus setting will be a wonderful environment to learn, to work and to live.”

- 223.1 HECTARES OF LAND SITUATED ON INDEPENDENCE DRIVE
- 8KM NORTH OF LAE CBD.
- TEACHING FACILITIES AND ACCOMMODATION FOR STUDENTS AND STAFF AS WELL AS A CLINIC, SPORTS FACILITIES AND LIBRARY.
- NINETY-THREE YEAR AND SIXTY DAY LEASE FROM THE 13TH DECEMBER 1973 TO BE RENEWED.



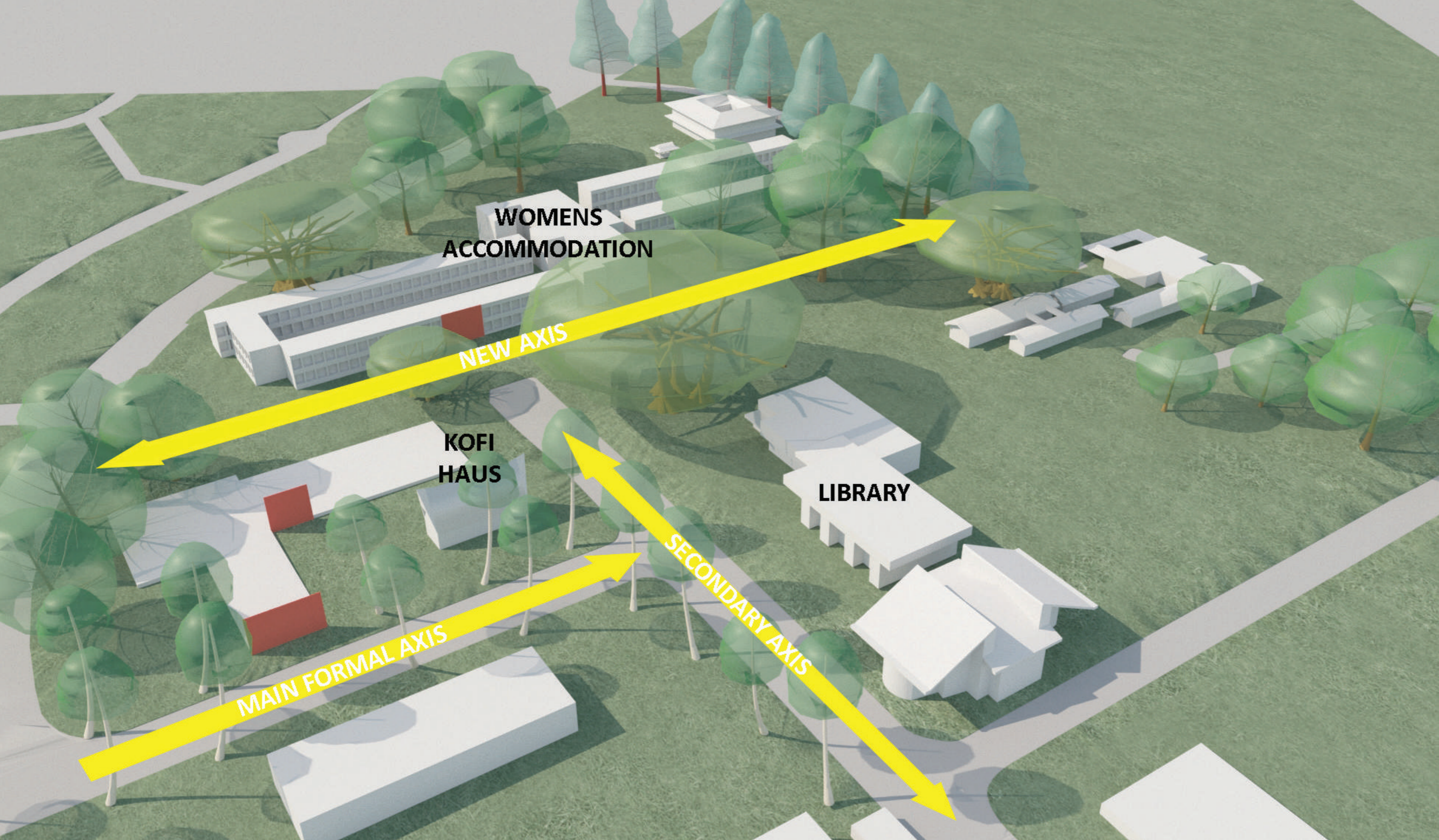


EXISTING CAMPUS



CAMPUS MASTERPLAN





"The building is in a prime position, adjacent to the historic Kofi Haus, near the Library and fronting the University's Main Avenue"



UNITECH FUTURE DEVELOPMENT



UNITECH DINING HALL | REFERENCE DESIGN



DESIGN PRINCIPLES

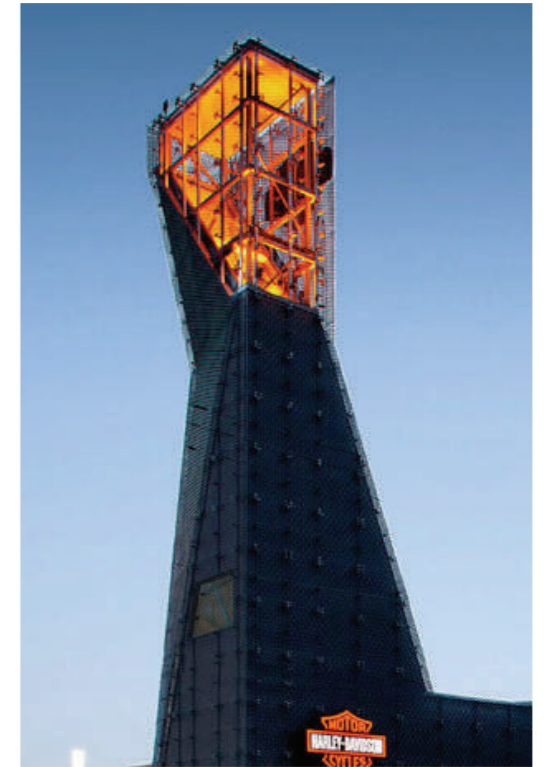
- A dramatic projecting roofline from the ridge of the southern wing will become a campus landmark on the main avenue of the University.
- The building layout creates a courtyard (between the southern and eastern wings) in a way that gives prominence to the historic Kofi Haus building. This courtyard is made secure by joining the Kofi Haus to the dining hall wings with a high-quality spear fence.
- The northern and western edges of the building are more closed in character. This is an appropriate interface to the sleeping quarters that lie to the north and the 'back-of-house' functions at the west.
- The main dining areas in the hall are open to the landscape. The southern wing and the south edge of the east wing are visually open while being physically secure through the use of timber batten screen.
- Cost effective yet high quality. The design anticipates using a modified pre-fabricated steel-framed shed as the base building for each of the wings.
- A skillion-roof addition along the northern edge creates an extension with a lower ceiling giving it a more intimate character than the dramatic main halls.
- The building is on an elevated concrete slab, 450mm above ground level. This provides a slightly elevated position for occupants of the buildings and creates a raised balcony at the edge of the courtyard that will be used for informal seating and social interaction.



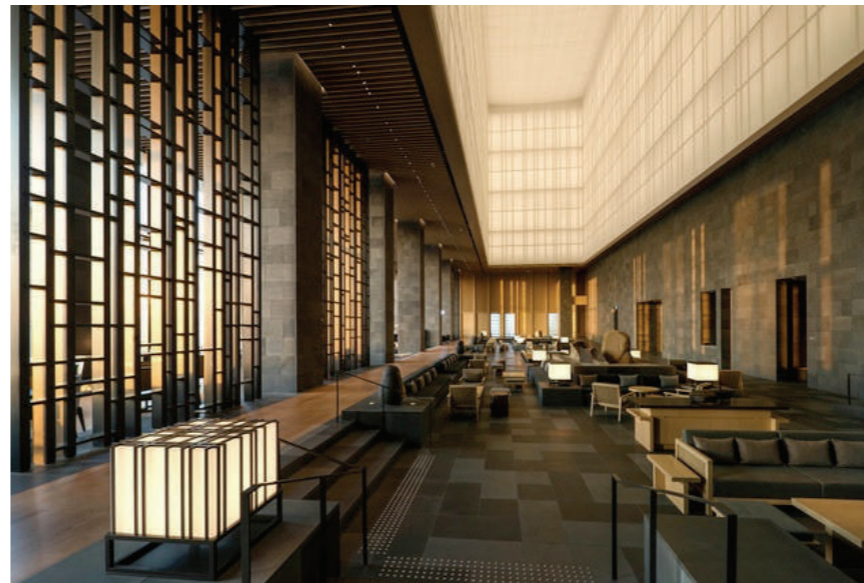
ROBUST AND DISTINCTIVE MATERIALS WITH GOOD NATURAL LIGHT



DISTINCTIVE SHELTERING ROOF FORM WITH INFORMAL SEATING ALONG BUILDING EXTERIOR



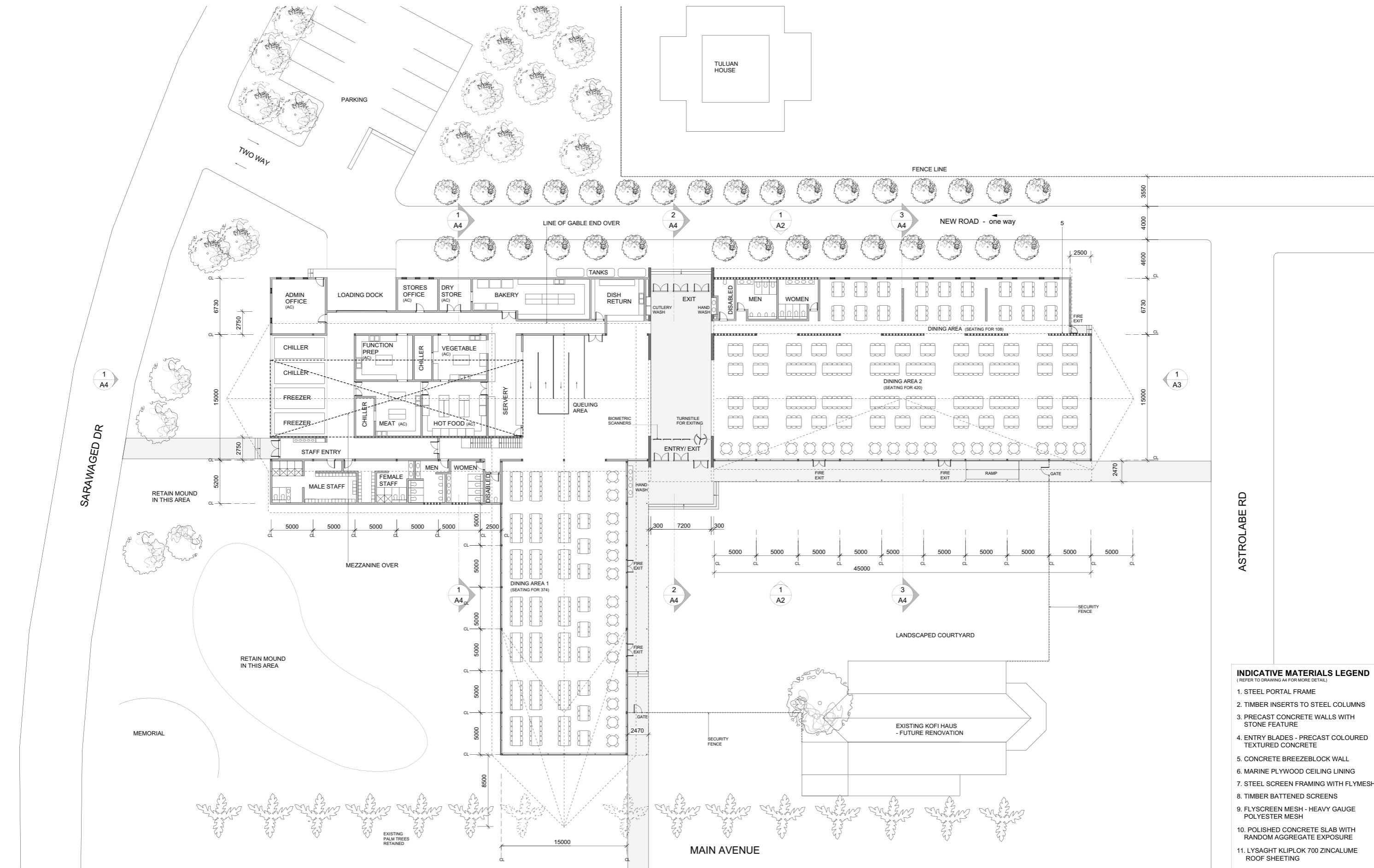
ICONIC ELEMENT ILLUMINATED TO SHOW "WE ARE OPEN"



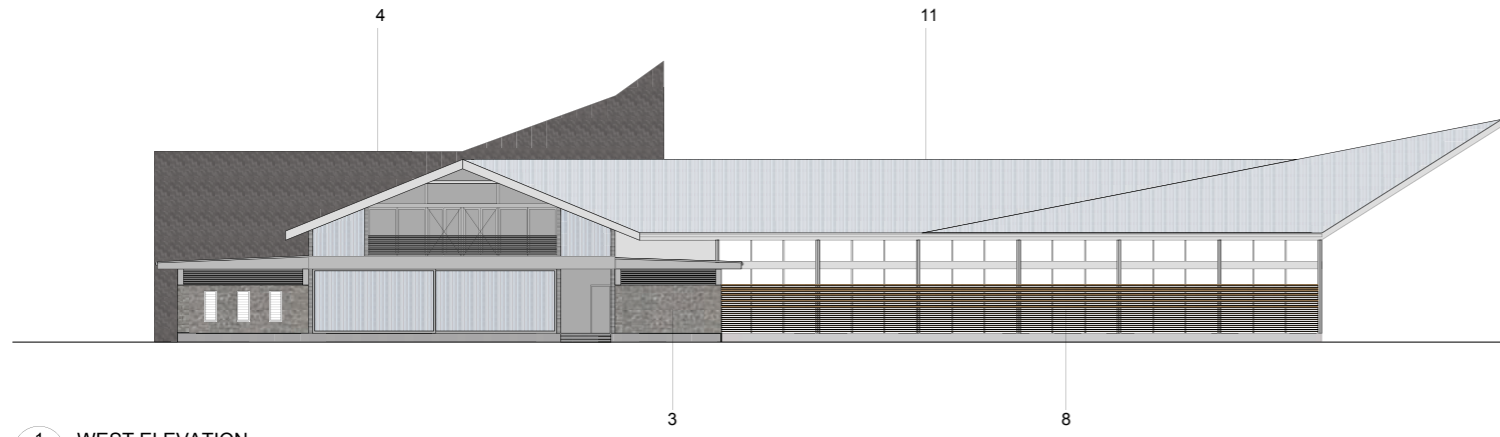
GENEROUS SOCIAL SPACE WITH A VARIETY OF SEATING POSITIONS



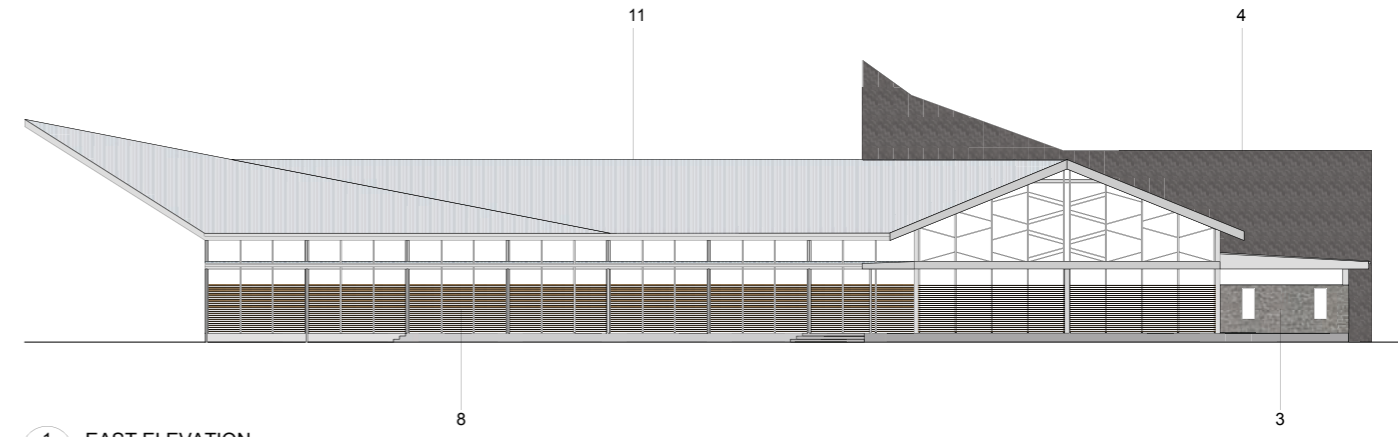
MAIN ENTRY SPACE TO BE DRAMATIC AND DISTINCTIVE



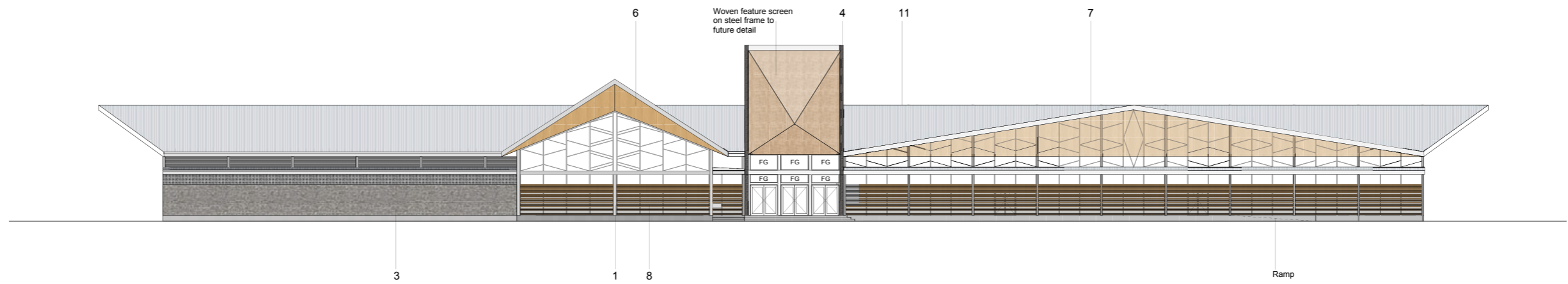
- INDICATIVE MATERIALS LEGEND**
(REFER TO DRAWING A4 FOR MORE DETAIL)
1. STEEL PORTAL FRAME
 2. TIMBER INSERTS TO STEEL COLUMNS
 3. PRECAST CONCRETE WALLS WITH STONE FEATURE
 4. ENTRY BLADES - PRECAST COLOURED TEXTURED CONCRETE
 5. CONCRETE BREEZEBLOCK WALL
 6. MARINE PLYWOOD CEILING LINING
 7. STEEL SCREEN FRAMING WITH FLYMESH
 8. TIMBER BATTENED SCREENS
 9. FLYSCREEN MESH - HEAVY GAUGE POLYESTER MESH
 10. POLISHED CONCRETE SLAB WITH RANDOM AGGREGATE EXPOSURE
 11. LYSAGHT KLIPLOK 700 ZINCALUME ROOF SHEETING



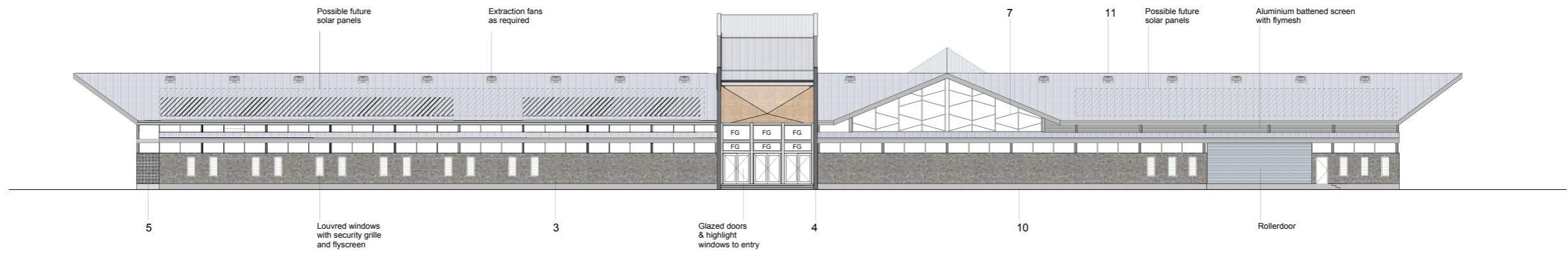
1 WEST ELEVATION
A-201 1:200 @ A1



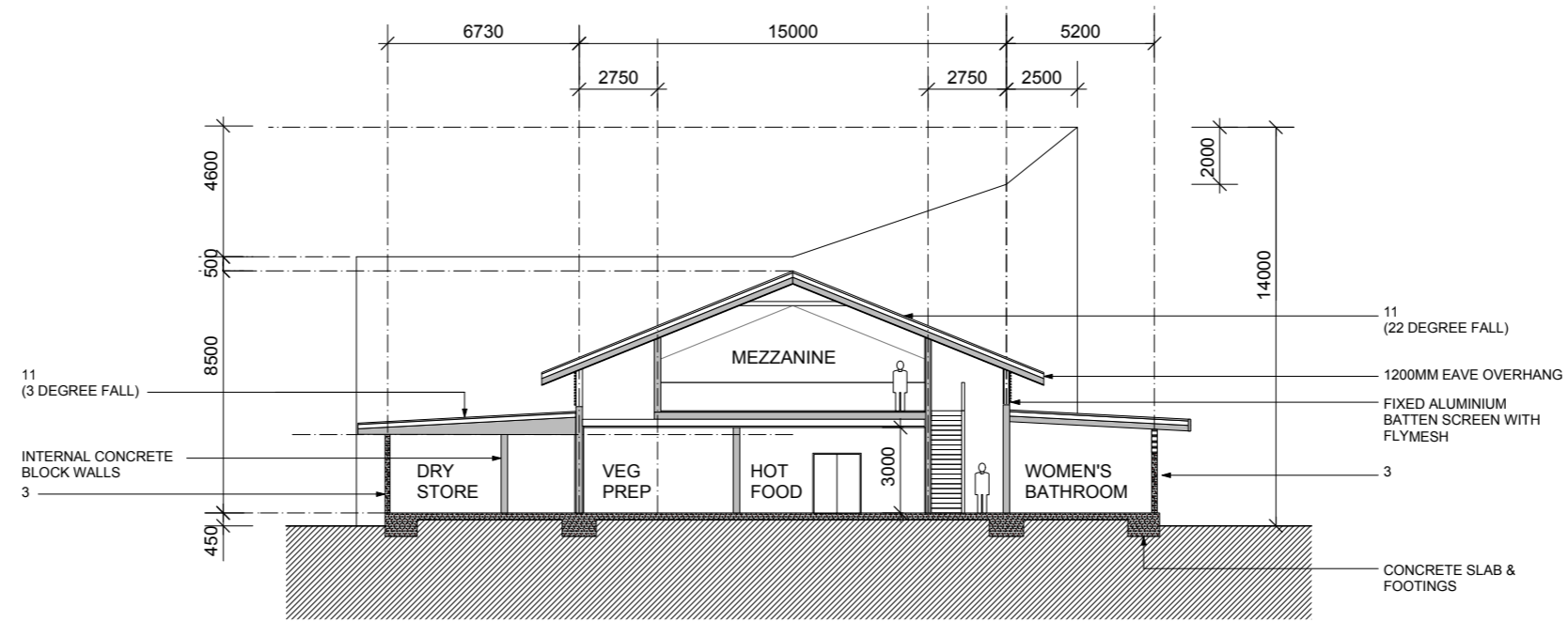
1 EAST ELEVATION
A-201 1:200 @ A1



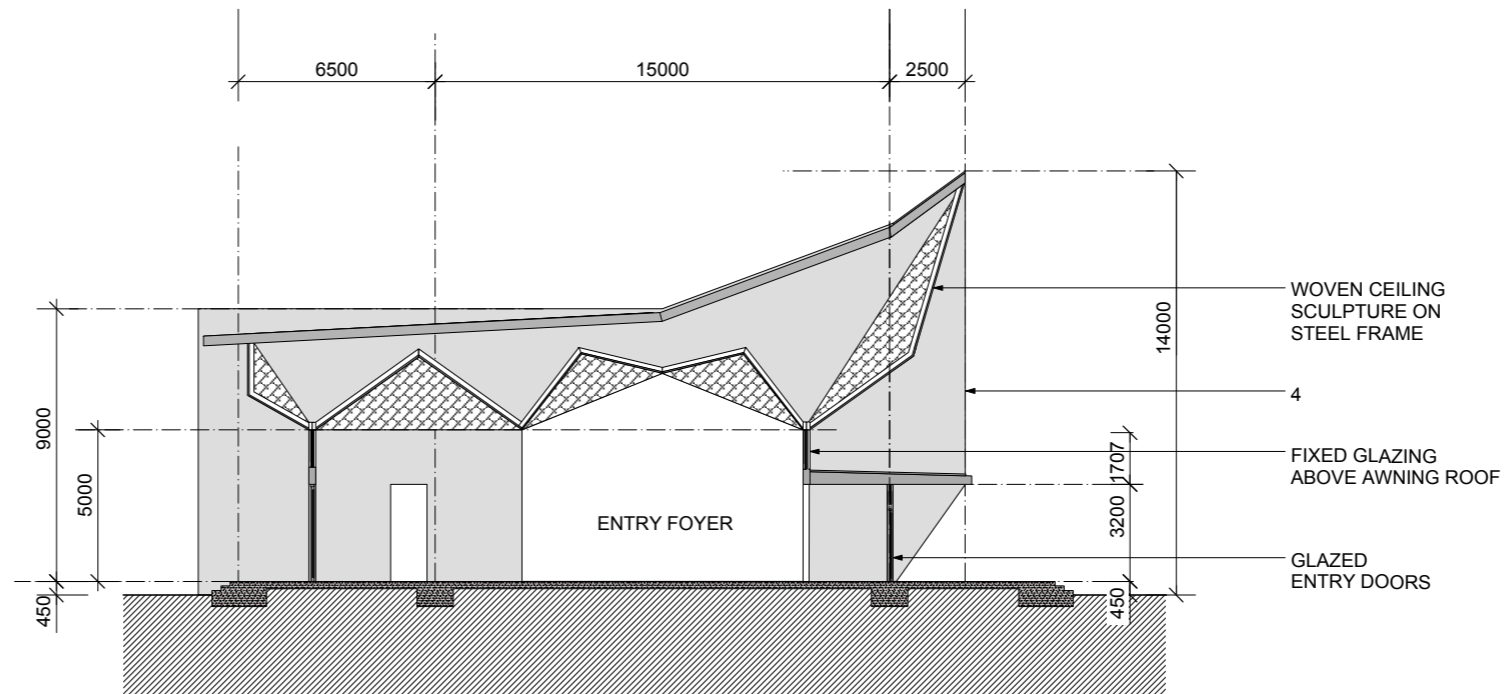
2 SOUTH ELEVATION
A-200 1:200 @ A1



1 NORTH ELEVATION
A-200 1:200 @ A1



1 SECTION C
- Scale: 1:200



1 SECTION B
- Scale: 1:200



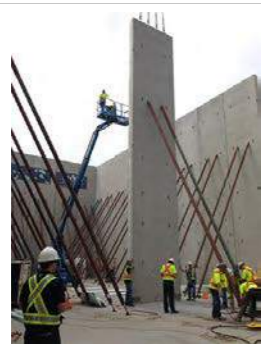
1. STEEL PORTAL FRAME



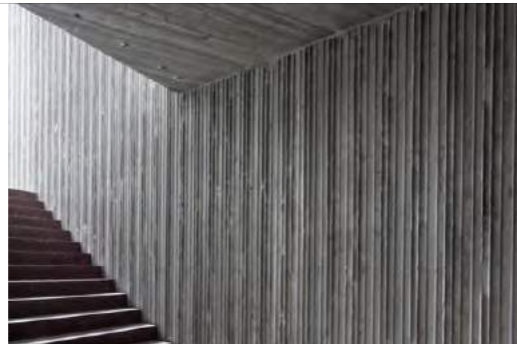
2. TIMBER INSERTS TO STEEL COLUMNS



3. PRECAST CONCRETE WALLS WITH INSET STONE FEATURE



4. ENTRY BLADES - PRECAST COLOURED TEXTURED CONCRETE



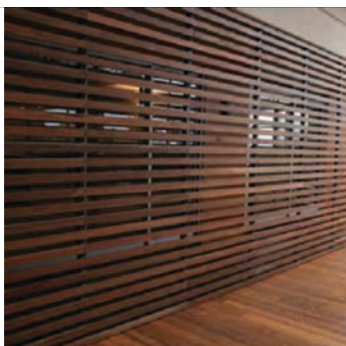
5. CONCRETE BREEZEBLOCK



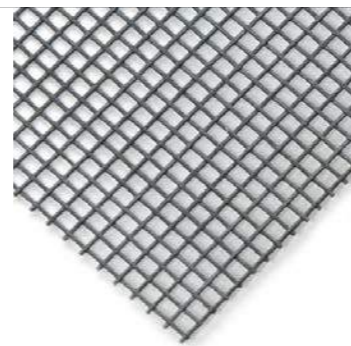
6. MARINE PLYWOOD CEILING LINING



7. STEEL SCREEN FRAMING



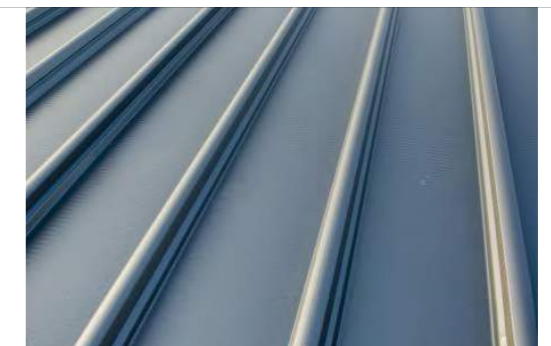
8. TIMBER BATTENED SCREENS



9. FLYSCREEN MESH - HEAVY GAUGE POLYESTER MESH



10. POLISHED CONCRETE SLAB WITH RANDOM AGGREGATE EXPOSURE



11. LYSAGHT KLIPLOK 700 ZINCALUME ROOF SHEETING

